

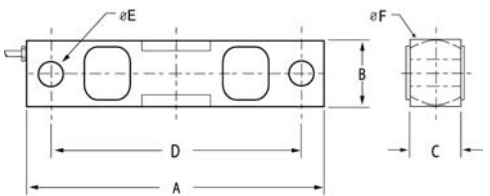
DBS Double Ended Shear Beam, Nickel Plated



CAPACITY MODEL	
2.5K LB	DBS-2.5K
5K LB	DBS-5K
10K LB	DBS-10K
15K LB	DBS-15K
20K LB	DBS-20K
25K LB	DBS-25K
30K LB	DBS-30K
50K LB	DBS-50K
75K LB	DBS-75K

DESCRIPTION	PRICE LIST
Double Ended Shear Beam Load Cells (Equivalent to Rice Lake RL 75016 & Sensortronics 65016)	
• 2.5K, and 5K lb capacities	\$460.00
Double Ended Shear Beam Load Cells	
• 10K, 15K, 20K, 25K, 30K, 50K, 75K capacities	\$515.00

DIMENSIONS:							
CAPACITY		A	B	C	D	ØE	ØF
2.5K - 5K	in.	7.50	1.25	1.25	0.75	0.50	1.25
	mm.	190.5	31.8	31.8	158.8	12.7	31.7
10K - 30K	in.	8.75	1.94	1.44	7.50	0.81	2.00
	mm.	222.2	49.3	36.6	190.5	20.6	50.8
50K - 75K	in.	13.5	2.94	2.44	11.50	1.31	3.00
	mm.	342.9	74.7	62.0	292.1	33.3	76.2



SPECIFICATIONS:	
Rated Output:	3.0mV/V ± 1%
Zero Balance:	± 1% of rated output
Creep after 20 minutes:	0.03% of rated output
Nonlinearity:	0.03% of rated output
Hysteresis:	0.02% of rated output
Repeatability:	0.02% of rated output
Temp. effect on output:	0.002% of applied output/°C
Temp. effect on zero:	0.002% of rated output/°C
Safe Temp. Range:	-10°C to + 80°C
Temp. Compensated:	-10°C to + 50°C
Safe Overload:	1.5 x rated capacity
Input Impedance:	7500Ω ± 30Ω
Output Impedance:	350Ω ± 3Ω
Insulation Resistance:	>5000 MΩ
Rated Excitation:	10V DC/AC
Maximum Excitation:	20V DC/AC
Cable Length:	20 feet

