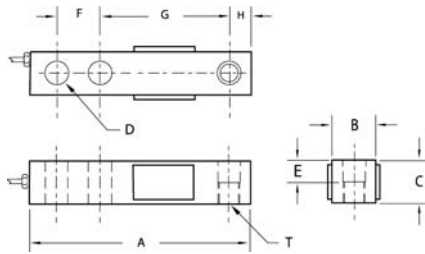


SBS Single Ended Shear Beam, Nickel Plated



CAPACITY	MODEL
250 LB	SBS-250
500 LB	SBS-500
750 LB	SBS-750
1K LB	SBS-1K
2.5K LB	SBS-2.5K
4K LB	SBS-4K
5K/SE LB	SBS-5KS
5K/LE LB	SBS-5KL
10K LB	SBS-10K
15K LB	SBS-15K
20K LB	SBS-20K

DESCRIPTION	PRICE LIST
NTEP Shear Beam Load Cells Small Envelope (Equivalent to RT1 5123 & Sensortronics 65023) • 250 lb, 500 lb 750 lb, 1K, 2.5K, 4K, and 5K lb capacities	\$125.00
NTEP Shear Beam Load Cells Large Envelope • 5K, and 10K capacities	\$225.00
Non-NTEP Shear Beam Load Cells • 15K, and 20K capacities	\$415.00

DIMENSIONS:

CAPACITY		A	B	C	D	E	F	G	H	T
1K - 5K/SE	in.	5.12	1.25	1.25	0.53	0.62	1.00	3.00	0.50	1/2-20 UNF-2B
	mm.	130.0	31.8	31.8	13.5	15.7	25.4	76.2	12.7	
5K/LE-10K	in.	6.75	1.50	1.50	0.78	0.75	1.50	3.75	0.75	3/4-16 UNF-2B
	mm.	171.4	38.1	38.1	19.8	19.0	38.1	95.2	19.0	
15K-20K	in.	8.75	2.00	2.00	1.03	1.00	2.00	4.75	1.00	1-14 UNF-2B
	mm.	222.2	50.8	50.8	26.2	25.4	50.8	120.6	25.4	

SPECIFICATIONS:

Rated Output:	3.0mV/V ± 1%
Zero Balance:	± 1% of rated output
Creep after 20 minutes:	0.03% of rated output
Nonlinearity:	0.03% of rated output
Hysteresis:	0.02% of rated output
Repeatability:	0.02% of rated output
Temp. effect on output:	0.002% of applied output/°C
Temp. effect on zero:	0.002% of rated output/°C
Safe Temp. Range:	-10°C to + 80°C
Temp. Compensated:	-10°C to + 50°C
Safe Overload:	1.5 x rated capacity
Input Impedance:	380Ω ± 30Ω
Output Impedance:	350Ω ± 3Ω
Insulation Resistance:	>5000 MΩ
Rated Excitation:	10V DC/AC
Maximum Excitation:	20V DC/AC
Cable Length:	20 feet

SCHEMATIC:

